

Small investment
BIG OPPORTUNITIES

**COLORJET DELIVERS IMPECCABLE PRINT RESULTS
& FLAWLESS SERVICE ACROSS THE WORLD**

SPECIFICATIONS

Model		VERVE MINI	
Model		K6622	
Printing Technology		Drop-on-demand, Piezo Electric Inkjet	
Print Heads		Industrial Grade Jetting Assemblies	
No. of Print Heads		6	
Media	Size	1050 x 1650 mm	
	Thickness	Maximum 65 mm	
	Handling	Suction & Blower	
Printing Size		1000 x 1600 mm	
Curing System		Dual UV LED Lamps	
Ink	Type	UV LED Curable Ink	
	System	Automatic ink supply system	
	Colors	CMYK + W + V	
Printing Resolution (dots per inch)		1800 dpi	
Distance Accuracy		Error of less than $\pm 0.3\%$ of distance travelled, or ± 0.3 mm, whichever is greater	
Connectivity/Interface		High Speed USB	
Power Requirements		AC 230 V, 20 A, 50/60Hz	
Dimensions (Printer Only) (LxWxH)		2250 x 2200 x 1200mm	
Dimensions (With Packing) (LxWxH)		2700 x 1400 x 1700mm	
RIP Software		Flexi	
Weight		N.W. 375 Kg, G.W. 635 Kg	
Environmental	Power ON	Temperature: 20 to 28 °C Humidity: 40 to 60%RH (Non-condensing)	
	Power OFF	Temperature: 20 to 28 °C Humidity: 40 to 60%RH (Non-condensing)	
Mode	Print DPI	Passes	Print Speed (Sqft/hr)
Mode 1	720 x 900	6	60
Mode 2	720 x 1200	8	48

COLORJET GROUP

INDIA : B-195, Phase-II, Noida-201305 (U.P.), INDIA. T +91 120 4897992

DUBAI : Block-A, Office No: 115, Hamsah Building, Karama, P.O. Box: 123360, Dubai-UAE. T 00971 43961744

sales@colorjetgroup.com | www.colorjetgroup.com

Accessories shown along with different printers in this brochure are not part of standard equipment. Color may vary from actual body color due to printing on paper. Colorjet reserves the right to change specifications without prior notice. All speed limits mentioned in this brochure were tested under special conditions. All trademarks, logos, symbols and designs depicted / mentioned in this brochure are trade names, trademarks and copyrights of their respective brand owners.

VERVE mini
TRUE FLATBED LED UV PRINTER



VERVE mini *More Value and Creativity at Affordable Cost*



THE MOST VERSATILE PRINTER

- Print on foam board, acrylic, WPC, MDF, ACM, GLASS, tile, 5'x3' cut sheet, Leatherette-foil-art-craft-corrugated paper, etc.
- Maximum thick media up to 65 mm
- Maximum speed up to 60 sqft/hr.
- Print width 1050 x 1650MM

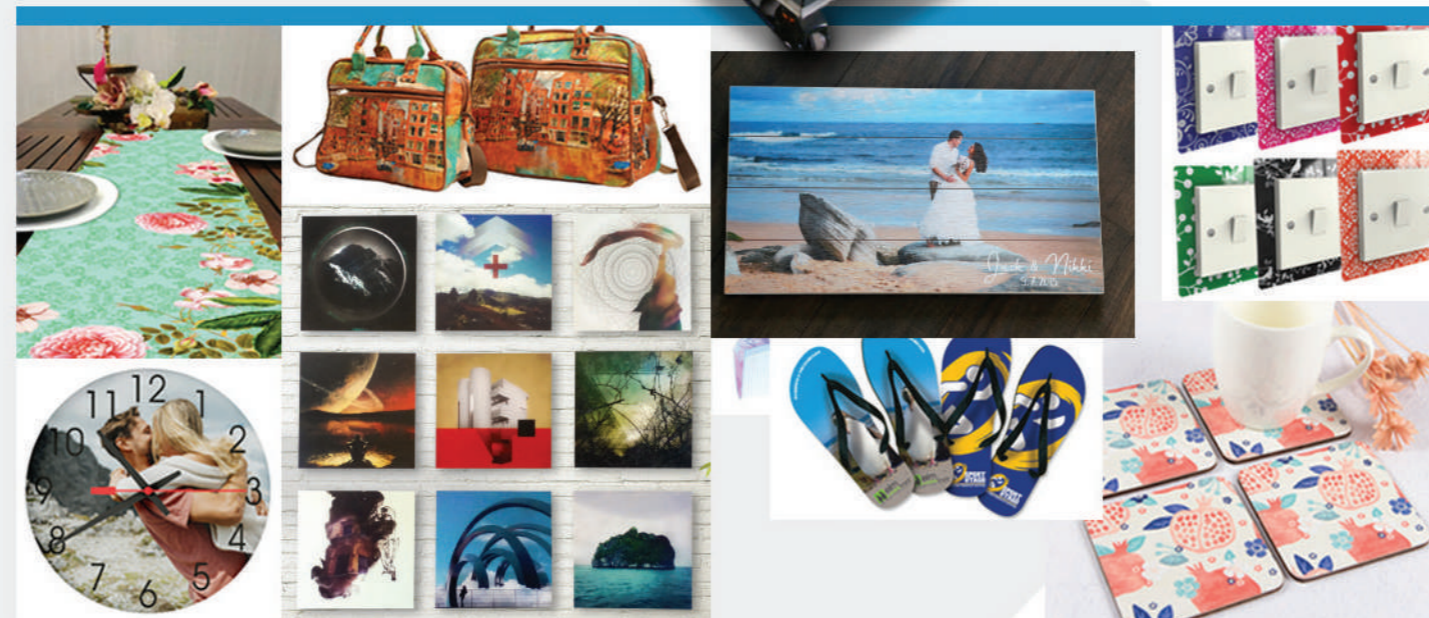
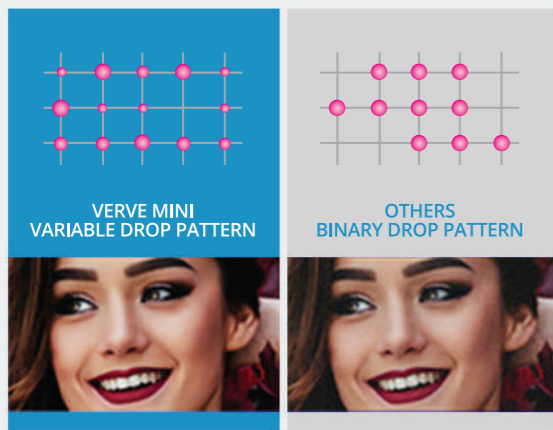
MULTILAYER PRINTING

Our revolutionary **Multi-layer Technology** allows you to print inline on virtually any object or surface adding embossing texture white and 3D effects



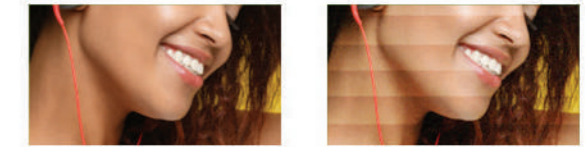
VARIABLE DROP TECHNOLOGY

Variable Drop Technology ensures smooth and quality printing by correctly placing each ink drop on the media



CIPO - COLORJET INTELLIGENT PASS OPTIMISATION

has been specially designed to prevent banding while printing on different substrates



BEST IN CLASS AUTOMATION

- UV LED Curing flatbed enables high quality direct printing on almost any kind of Media
- Industrial Print Head with 2.5PL
- Anti crash sensor to prevent media from damaging the heads while printing.
- Low ink volume Reminder System
- Individual Purge System
- Automatic Head Height Adjustor
- Negative Pressure System
- Three Zone Vacuum System

THE HIGH PRECISION BED

- A perfect bed size and maximum head height opens various segments in the world of corporate gifting and personalise accessory printing
- Printer Bed is Sturdy, Reliable and Long lasting to print whatever you want and its multi zones aluminium made suction table with heavy-duty structure is designed to accommodate almost all kind of media

SMART MEDIA RETENTION SYSTEM

Verve Mini powerful vacuum holds substrates flat and firmly in place



ENDLESS APPLICATIONS

ColorJet's Verve Mini flatbed LED UV printer is developed to deliver unparalleled performance and productivity for Gift makers, Architects, interior decorators, Promotional items, Personalised giftwares, Bespoke products, Control panels, Packaging, Small-medium format rigid signage, Instrumentation & Gauge faces, Custom components, Branded electronic device cases and covers and much more